

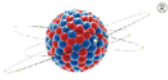
# Anti-Tau Antibody

## NH-R-205-09

<b>Product Type:</b>	Recombinant Rabbit monoclonal IgG, primary antibodies
<b>Species reactivity:</b>	Human, Mouse, Rat
<b>Applications:</b>	IF-Tissue Clearing
<b>Clone number:</b>	SD205-09

<b>Description:</b>	Tau, also known as MAPT (microtubule-associated protein tau), MAPTL, MTBT1 or TAU, is a 758 amino acid protein that localizes to the cytoplasm, as well as to the cytoskeleton and the cell membrane, and contains four Tau/MAP repeats. Expressed in neuronal tissue and existing as multiple alternatively spliced isoforms, Tau functions to promote microtubule assembly and stability and is thought to be involved in the maintenance of neuronal polarity. Tau may also link microtubules with neural plasma membrane components and, addition to its role in microtubule stability, is also necessary for cytoskeletal plasticity. Tau is highly subject to a variety of post-translational modifications, including phosphorylation on serine and threonine residues, polyubiquitination (and subsequent proteasomal degradation) and glycation of specific Tau isoforms. Defects in the gene encoding Tau are associated with Alzheimers disease, pallido-ponto-nigral degeneration (PPND), corticobasal degeneration (CBD) and progressive supranuclear palsy (PSP).
<b>Immunogen:</b>	Synthetic peptide within human Tau aa 600-640.
<b>Positive control:</b>	Mouse brain tissue .
<b>Subcellular location:</b>	Cytoplasm, Cell membrane, Cell projection.
<b>Recommended Dilutions:</b>	
<b>IF-Tissue Clearing</b>	1:100
<b>Adaptive Clearing kit</b>	Enhanced clearing kit(Cat#:NH-CR-230701)
<b>Storage Buffer:</b>	1*TBS(pH7.4), 0.05% BSA, 40% Glycerol. Preservative:0.05% Sodium Azide.
<b>Storage Instruction:</b>	Store at +4°C after thawing. Aliquot store at -20°C or -80°C. Avoid repeated freeze / thaw cycles.
<b>Purity:</b>	Protein A affinity purified





## Images

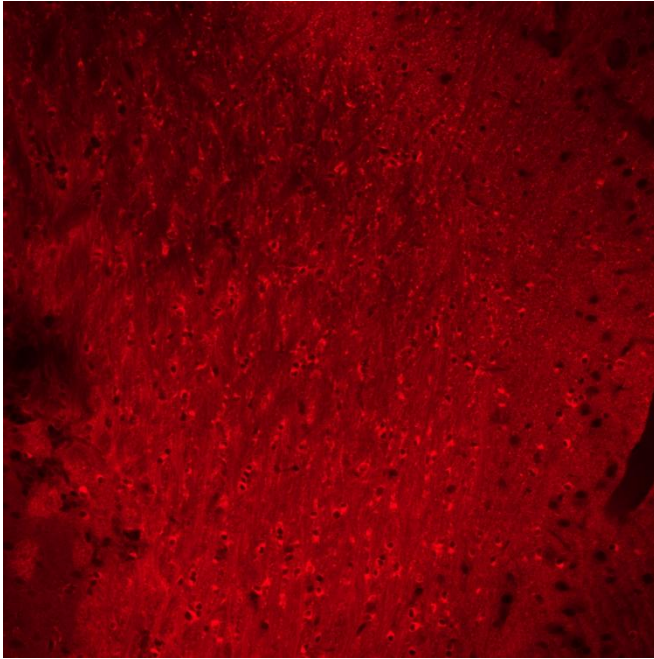


Fig1:Immunofluorescence analysis of fresh mouse brain tissue labeling Tau Recombinant Rabbit Monoclonal Antibody (NH-R-205-09) at 1/100 dilution.

The section was treated with Enhanced clearing kit(Cat#:NH-CR-230701), the tissues were blocked for 2 hours at 4°C, washed with PBS, and then probed with the primary antibody (NH-R-205-09,1/100) overnight at 4°C, washed with PBS. Goat Anti-Rabbit IgG H&L (Alexa Fluor® 488) was used as the secondary antibody at 1/100 dilution. Image acquisition was performed with Zeiss 980.

